

Sno-King Agility Club
Running Order and Class Information May 6-8, 2022
Fun Fur Paws – Mt. Vernon, WA

I-5 North/South: Take Exit #218 (Starbird Rd) and East (Southbound turn left, Northbound turn right). Continue East to the 4-way stop at Bulson Rd and turn left. Follow Bulson Rd. to the intersection with Tyee Rd (0.7 mi). Turn left and then after a short distance, turn right onto Stargate Place (look for the sign for Fun Fur Paws). Follow the road to the arena and parking.

Judge: Mark & Ann Rudd

Class Schedule: See charts below: Start 10:00 AM Friday and 9:00 AM on weekend

Opening/Closing: Opened 3/15/22, closed 4/29/22

Walkthroughs: There will be split walkthroughs for **Exc Std and Jww**. There will be plenty of walkthrough time for each class, so don't worry.

Veterinarian: 24 Hour Pet Emergency Center, 14434 Avon Allen Rd., Mt. Vernon, WA 360-848-5911
Chuckanut Valley Veterinarian (staffed 24/7), 896 N. Burlington Rd., Burlington, WA 360-757-3722

Moveups: The deadline for moveups is 5/2/22 at 6PM. Moveups must be received in writing or email by that deadline. Day-to-Day moveups are being accepted for Saturday and Sunday.

Setup and crating: There is **NO general crating allowed in the building, but some chairs are allowed around the rings.**

Popup tents and crating is available along the West fence and North grass areas. If you are crating from your car, make sure to leave windows/doors open for air flow. If using a popup or crate on the grass, please do NOT use mats or leave items overnight.

RVs: Overnight RV camping is limited and must be reserved. Email r2agility@gmail.com with questions.

Food: Due to the required COVID restrictions by the state, we will NOT be providing lunch, but some snacks and coffee are planned. Please bring your own provisions ☺

Workers: We **STILL** need your help putting on the show.!!! If you can help out for a class – or a day – let us know. We'll have a chief worker person coordinating thing and likely have the white boards setup like usual. THANKS! Agility shows can't run smoothly without your help!

Measuring: A volunteer measuring official will be on site. Check with the score table for more info.

Photographer: Kathy Kolatski of 2 Dogs and a Flounder will be taking photos at the show on Saturday.

Important Housekeeping Info

Please use the exercise fields or the grassy areas around the parking lot to walk your dog. Please pick up after your dog. If your dog accidentally relieves itself on the building structure, please use the cleaning sprays provided by Fun Fur Paws.

Pull-in parking around the building ONLY. Do NOT back in to park around the building. If you do, you will be required to re-park.

5 MPH Speed Limit at Fun Fur Paws

Go To
www.r2agility.net
for Check-In, Running Order, and Maps

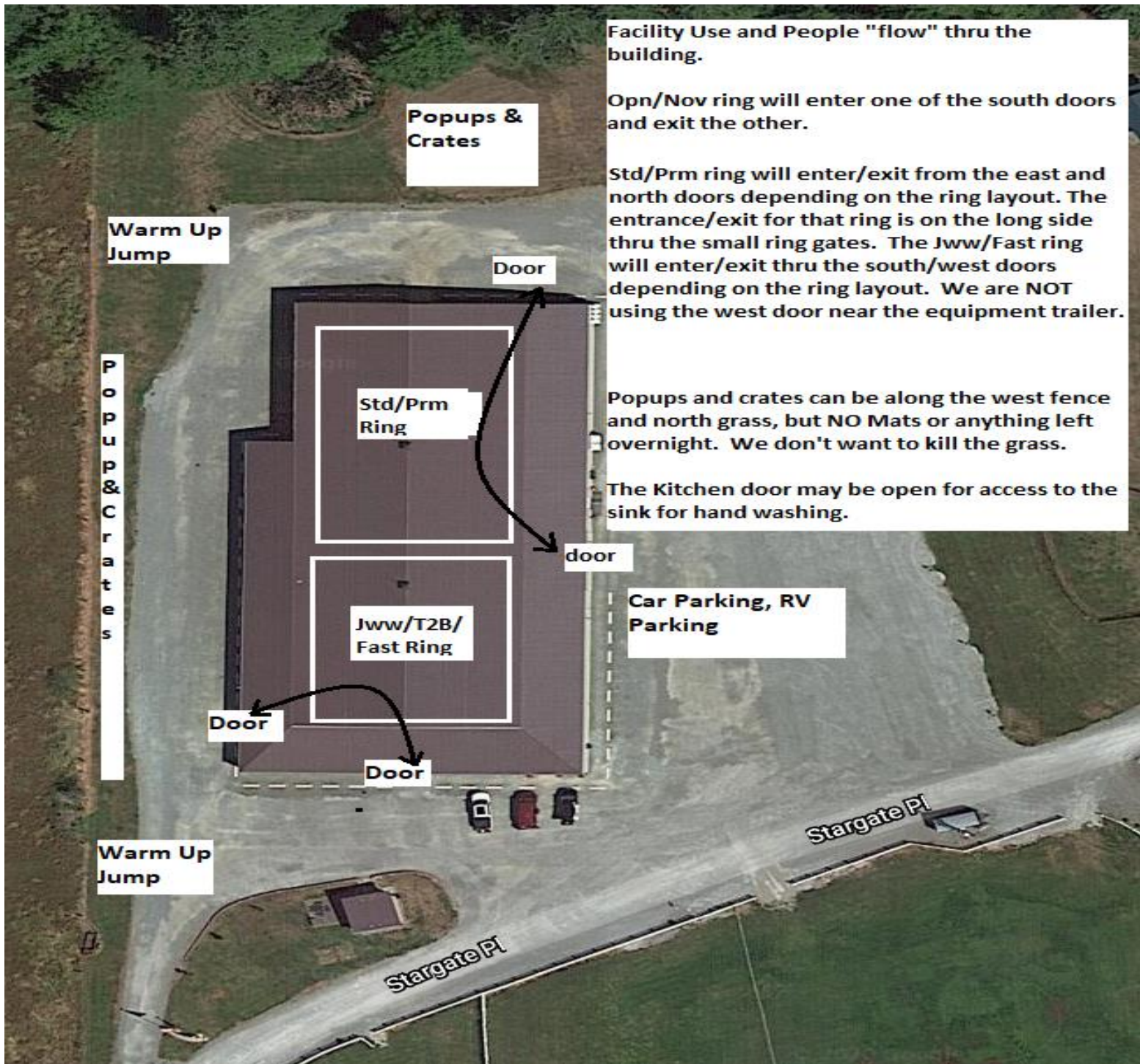
Course Maps: We will not be providing general paper copies of course maps. Maps will be made available on our website – www.r2agility.net sometime after **midnight**. **Judges are not allowed to send us maps until after midnight** and we will make every effort to email/post them by 7:30 AM. Maps will be posted at a couple of places around the arena.

Gate Check-in: We will have a normal gate steward with a paper gate sheet but will also be using an electronic gate checking and monitoring system available by any internet or Wi-Fi enabled device with a web browser.

The system allows you to check-in, mark conflict or absent, see progress, and live scores as they are entered into the computer. Please check the status to make sure your runs are correct.

Maps will also be available on the same page (internet or local) sometime after 7:30 AM.

Results: Results will be posted in the arena and will be available on the same web page as the running order.



Facility Use and People "flow" thru the building.

Opn/Nov ring will enter one of the south doors and exit the other.

Std/Prm ring will enter/exit from the east and north doors depending on the ring layout. The entrance/exit for that ring is on the long side thru the small ring gates. The Jww/Fast ring will enter/exit thru the south/west doors depending on the ring layout. We are NOT using the west door near the equipment trailer.

Popups and crates can be along the west fence and north grass, but NO Mats or anything left overnight. We don't want to kill the grass.

The Kitchen door may be open for access to the sink for hand washing.

Car Parking, RV Parking

Warm Up Jump

Popups & Crates

Popups & Crates

Door

Std/Prm Ring

door

Jww/T2B/Fast Ring

Door

Door

Warm Up Jump

Stargate Pl

Stargate Pl

	Ring 1	Ring 2
<p>Friday 10:00 AM start</p> <p>Tall to Small</p> <p>First time in each ring is accurate, all others are estimates. Plan to be at the trial site well before the listed time in case we run early.</p>		<p>Fast Exc/Opn/Nov Walk 10:00 Run all heights / classes</p>
	<p>Prm Jww Walk 10:30 Run</p>	
		<p>T2B Walk 11:30 Run</p>
	<p>Prm Std Walk 11:25 Run</p>	
		<p>Nov Jww Walk 12:40 Run</p>
	<p>Exc Std Walk 24-16 12:15 Run 24-16</p>	
	<p>Walk 12-4 1:00 Run 12-4</p>	
		<p>Open Jww Walk 1:35 Run</p>
	<p>Open Std Walk 2:10 Run</p>	
	<p>Novice Std Walk 3:10 Run</p>	<p>Exc Jww Walk 24-16 2:30 Run 24-16</p>
<p>3:30 Done</p>	<p>3:20 Walk 12-4 Run 12-4</p>	
	<p>3:40 Done</p>	

Saturday

9:00 AM start

Small to Tall

First time in each ring is accurate, all others are estimates. Plan to be at the trial site well before the listed time in case we run early.

9:30 **Prm Jww**
Walk
Run

10:20 **Prm Std**
Walk
Run

11:20 **Exc Std**
Walk 4-12
Run 4-12

12:10 Walk 16-24
Run 16-24

1:30 **Open Std**
Walk
Run

2:25 **Novice Std**
Walk
Run

3:00 Done

9:00 **Fast Exc/Opn/Nov**
Walk
Run

10:20 **T2B**
Walk
Run

11:40 **Nov Jww**
Walk
Run

12:45 **Open Jww**
Walk
Run

1:40 **Exc Jww**
Walk 4-12
Run 4-12

2:20 Walk 16-24
Run 16-24

3:00 Done

Sunday

9:00 AM start

Tall to Small

First time in each ring is accurate, all others are estimates. Plan to be at the trial site well before the listed time in case we run early.

9:30 **Prm Jww**
Walk
Run

10:25 **Prm Std**
Walk
Run

11:25 **Exc Std**
Walk 24-16
Run 24-16

12:20 Walk 12-4
Run 12-4

1:25 **Open Std**
Walk
Run

2:25 **Novice Std**
Walk
Run

3:05 Done

9:00 **Fast Exc/Opn/Nov**
Walk
Run

10:20 **T2B**
Walk
Run

11:35 **Nov Jww**
Walk
Run

12:35 **Open Jww**
Walk
Run

1:25 **Exc Jww**
Walk 24-16
Run 24-16

2:25 Walk 12-4
Run 12-4

2:45 Done

TRIAL ENTRY STATISTICS Preliminary running order contingent on move-ups not yet received.

Friday – 302 runs

STD		NOV										
Division	4	8	12	16	20	24	24C	14	18	Judge	Ring	
NOV A					1	1				Ann Rudd	1	
NOV B		1	2		2					Ann Rudd	1	
NOV P				1	2					Ann Rudd	1	
NOV		1	2	1	5	1				TOTAL	10	
STD		OPN										
Division	4	8	12	16	20	24	24C	14	18	Judge	Ring	
OPEN			2	1	4	3				Ann Rudd	1	
OPEN P	2	1		2	2					Ann Rudd	1	
OPN	2	1	2	3	6	3				TOTAL	17	
STD		EXC										
Division	4	8	12	16	20	24	24C	14	18	Judge	Ring	
EX		3		3	3	1				Ann Rudd	1	
EX P	1	2		2						Ann Rudd	1	
MAS		7	4	4	7	3				Ann Rudd	1	
MAS P	1	6	1	10						Ann Rudd	1	
EXC	2	18	5	19	10	4				TOTAL	58	
STD		PREM										
Division	4	8	12	16	20	24	24C	14	18	Judge	Ring	
PRM		1	3		3					Ann Rudd	1	
PRM P		1	1	2						Ann Rudd	1	
PREM		2	4	2	3					TOTAL	11	
JWW		NOV										
Division	4	8	12	16	20	24	24C	14	18	Judge	Ring	
NOV A				1	1	1				Mark Rudd	2	
NOV B		1	1	1	4	2				Mark Rudd	2	
NOV P		1	1	1	4					Mark Rudd	2	
NOV		2	2	3	9	3				TOTAL	19	
JWW		OPN										
Division	4	8	12	16	20	24	24C	14	18	Judge	Ring	
OPEN		1	2		5	1				Mark Rudd	2	
OPEN P	2	2		2	2					Mark Rudd	2	
OPN	2	3	2	2	7	1				TOTAL	17	
JWW		EXC										
Division	4	8	12	16	20	24	24C	14	18	Judge	Ring	
EX		2	1	1	2	4				Mark Rudd	2	
EX P	1	2		3	1					Mark Rudd	2	
MAS		8	4	5	7	2				Mark Rudd	2	
MAS P	1	6	1	12	2					Mark Rudd	2	
EXC	2	18	6	21	12	6				TOTAL	65	
JWW		PREM										
Division	4	8	12	16	20	24	24C	14	18	Judge	Ring	
PRM		1	1	1	3					Ann Rudd	1	
PRM P	1	1	1	2						Ann Rudd	1	
PREM	1	2	2	3	3					TOTAL	11	
FAST		NOV										
Division	4	8	12	16	20	24	24C	14	18	Judge	Ring	
NOV A				1	1					Mark Rudd	2	
NOV B		1	1		3	2				Mark Rudd	2	
NOV P			2		2					Mark Rudd	2	
NOV		1	3	1	6	2				TOTAL	13	
FAST		OPN										
Division	4	8	12	16	20	24	24C	14	18	Judge	Ring	
OPEN			1	1	3					Mark Rudd	2	
OPEN P		1	1	2						Mark Rudd	2	
OPN		1	2	3	3					TOTAL	9	
FAST		EXC										
Division	4	8	12	16	20	24	24C	14	18	Judge	Ring	
EX		2		2	2	1				Mark Rudd	2	
EX P			1							Mark Rudd	2	
MAS		5		2	5	1				Mark Rudd	2	
MAS P		1	1	5						Mark Rudd	2	
EXC		8	2	9	7	2				TOTAL	28	
T2B		T2B										
Division	4	8	12	16	20	24	24C	14	18	Judge	Ring	
PREF	2	4	3	5	2					Mark Rudd	2	
REG		8	2	3	8	7				Mark Rudd	2	
T2B	2	12	5	8	10	7				TOTAL	44	
Judge Totals										Ring Totals		
Ann Rudd		107								Ring 1	107	
Mark Rudd		195								Ring 2	195	

Saturday – 345 runs

STD	NOV										
Division	4	8	12	16	20	24	24C	14	18	Judge	Ring
NOV A				1	2					Mark Rudd	1
NOV B			2	3	4	1				Mark Rudd	1
NOV P			1	4	4					Mark Rudd	1
NOV			3	8	10	1				TOTAL	22
Division	4	8	12	16	20	24	24C	14	18	Judge	Ring
OPEN			1	1	6	2				Mark Rudd	1
OPEN P				2	1					Mark Rudd	1
OPN			1	3	7	2				TOTAL	13
Division	4	8	12	16	20	24	24C	14	18	Judge	Ring
EX		3	2	3	1	1				Mark Rudd	1
EX P		2								Mark Rudd	1
MAS		8	4	5	9	5				Mark Rudd	1
MAS P	1	7	2	12	2					Mark Rudd	1
EXC	1	20	8	20	12	6				TOTAL	67
Division	4	8	12	16	20	24	24C	14	18	Judge	Ring
PRM		2	4	1	7	1				Mark Rudd	1
PRM P		1		1						Mark Rudd	1
PREM		3	4	2	7	1				TOTAL	17
Division	4	8	12	16	20	24	24C	14	18	Judge	Ring
NOV A				2	2					Ann Rudd	2
NOV B		1	1	3	5	4				Ann Rudd	2
NOV P	1		1	4	6					Ann Rudd	2
NOV	1	1	2	9	13	4				TOTAL	30
Division	4	8	12	16	20	24	24C	14	18	Judge	Ring
OPEN		1	2	2	6					Ann Rudd	2
OPEN P			1	3	1					Ann Rudd	2
OPN		1	3	5	7					TOTAL	16
Division	4	8	12	16	20	24	24C	14	18	Judge	Ring
EX		3	1	2	2	4				Ann Rudd	2
EX P		1		1						Ann Rudd	2
MAS		9	5	6	8	4				Ann Rudd	2
MAS P	1	7	2	14	2					Ann Rudd	2
EXC	1	20	8	23	12	8				TOTAL	72
Division	4	8	12	16	20	24	24C	14	18	Judge	Ring
PRM		1	2	1	6					Mark Rudd	1
PRM P		1		1						Mark Rudd	1
PREM		2	2	1	7					TOTAL	12
Division	4	8	12	16	20	24	24C	14	18	Judge	Ring
NOV A				1	1					Ann Rudd	2
NOV B		1	1	1		2				Ann Rudd	2
NOV P	1		1	4	3					Ann Rudd	2
NOV	1	1	2	6	4	2				TOTAL	16
Division	4	8	12	16	20	24	24C	14	18	Judge	Ring
OPEN			1	1	3					Ann Rudd	2
OPEN P				1						Ann Rudd	2
OPN			1	2	3					TOTAL	6
Division	4	8	12	16	20	24	24C	14	18	Judge	Ring
EX		1		1	1	1				Ann Rudd	2
EX P		1	1							Ann Rudd	2
MAS		6		2	1	1				Ann Rudd	2
MAS P		1		2						Ann Rudd	2
EXC		9	1	5	2	2				TOTAL	19
Division	4	8	12	16	20	24	24C	14	18	Judge	Ring
PREF		6	3	8	4					Ann Rudd	2
REG		6	3	8	8	9				Ann Rudd	2
T2B		12	6	16	12	9				TOTAL	55
Judge Totals										Ring Totals	
Ann Rudd		214								Ring 1	131
Mark Rudd		131								Ring 2	214

Sunday – 329 runs

STD	NOV										
Division	4	8	12	16	20	24	24C	14	18	Judge	Ring
NOV A			1	1	2					Ann Rudd	1
NOV B			2	3	4	1				Ann Rudd	1
NOV P			2	1	3					Ann Rudd	1
NOV			5	5	9	1				TOTAL	20
Division	4	8	12	16	20	24	24C	14	18	Judge	Ring
OPEN			2	2	6	2				Ann Rudd	1
OPEN P	1		1	1	2					Ann Rudd	1
OPN	1		3	3	8	2				TOTAL	17
Division	4	8	12	16	20	24	24C	14	18	Judge	Ring
EX		4	1	2	3	2				Ann Rudd	1
EX P					1					Ann Rudd	1
MAS		8	6	5	8	3				Ann Rudd	1
MAS P	2	4		11	2					Ann Rudd	1
EXC	2	16	7	18	14	5				TOTAL	62
Division	4	8	12	16	20	24	24C	14	18	Judge	Ring
PRM			2	5	2	4	1			Ann Rudd	1
PRM P			1	1	4					Ann Rudd	1
PREM			3	6	6	4	1			TOTAL	20
Division	4	8	12	16	20	24	24C	14	18	Judge	Ring
NOV A			1	2	2					Mark Rudd	2
NOV B			1	3	4	2				Mark Rudd	2
NOV P			2	2	4					Mark Rudd	2
NOV			4	7	10	2				TOTAL	23
Division	4	8	12	16	20	24	24C	14	18	Judge	Ring
OPEN			3	3	6	1				Mark Rudd	2
OPEN P	1		1	1	1					Mark Rudd	2
OPN	1		4	4	7	1				TOTAL	17
Division	4	8	12	16	20	24	24C	14	18	Judge	Ring
EX		2	1	1	3	3				Mark Rudd	2
EX P				1	2					Mark Rudd	2
MAS		9	6	6	7	4				Mark Rudd	2
MAS P	2	4		13	3					Mark Rudd	2
EXC	2	15	7	21	15	7				TOTAL	67
Division	4	8	12	16	20	24	24C	14	18	Judge	Ring
PRM			1	3	2	4				Ann Rudd	1
PRM P			1	1	2					Ann Rudd	1
PREM			2	4	4	4				TOTAL	14
Division	4	8	12	16	20	24	24C	14	18	Judge	Ring
NOV A			1	2	1					Mark Rudd	2
NOV B		1	1	2	1	2				Mark Rudd	2
NOV P			2	2	1					Mark Rudd	2
NOV		1	4	6	3	2				TOTAL	16
Division	4	8	12	16	20	24	24C	14	18	Judge	Ring
OPEN			2		1					Mark Rudd	2
OPEN P				1	2					Mark Rudd	2
OPN			2	1	3					TOTAL	6
Division	4	8	12	16	20	24	24C	14	18	Judge	Ring
EX		1		2		2				Mark Rudd	2
MAS		6		2	2	2				Mark Rudd	2
MAS P		1		2						Mark Rudd	2
EXC		8		6	2	4				TOTAL	20
Division	4	8	12	16	20	24	24C	14	18	Judge	Ring
PREF		2	2	8	2					Mark Rudd	2
REG		6	4	6	8	9				Mark Rudd	2
T2B		8	6	14	10	9				TOTAL	47
Judge Totals										Ring Totals	
Ann Rudd		133								Ring 1	133
Mark Rudd		196								Ring 2	196