

# THANK YOU for COMING to the SHOW!!!!

## Samoyed Club of Washington State Running Order and Class Information Nov 25-27, 2022

### *Fun Fur Paws – Mt. Vernon, WA*

**I-5 North/South:** Take Exit #218 (Starbird Rd) and East (Southbound turn left, Northbound turn right). Continue East to the 4-way stop at Bulson Rd and turn left. Follow Bulson Rd. to the intersection with Tyee Rd (0.7 mi). Turn left and then after a short distance, turn right onto Stargate Place (look for the sign for Fun Fur Paws). Follow the road to the arena and parking.

**Judge:** Jan Skurzynski & Dale Mahoney

**Class Schedule:** See charts below: Start 10:00 AM Friday and 9:00 AM on weekend

**Opening/Closing:** Opened 10/22, closed 11/18

**Walkthroughs:** There will be split walkthroughs for **Exc Std, Exc Jww, Fast and T2B**. All other classes will be a combined walkthrough. There will be plenty of walkthrough time for each class, so don't worry.

**Veterinarian:** 24 Hour Pet Emergency Center, 14434 Avon Allen Rd., Mt. Vernon, WA 360-848-5911  
Chuckanut Valley Veterinarian (staffed 24/7), 896 N. Burlington Rd., Burlington, WA 360-757-3722

**Moveups:** The deadline for moveups is 11/21/22. Moveups must be received in writing or email by that deadline. Day-to-Day moveups are being accepted for Saturday and Sunday.

**Setup and crating:** There is **NO general crating allowed in the building at this time.**

**Popup tents and crating is available along the West fence and North grass areas. If you are crating from your car, make sure to leave windows/doors open for air flow. If using a popup or crate on the grass, please do NOT use mats or leave items overnight.**

**RVs:** Overnight RV camping is limited and must be reserved. Email [k.timmons@earthlink.net](mailto:k.timmons@earthlink.net) with questions.

**Food:** We will NOT be providing any food, snacks or refreshments at the show. Please bring your own provisions 😊

**Workers:** We STILL need your help putting on the show. If you can help out for a class – or a day – let us know. We'll have a chief worker person coordinating thing and likely have the white boards setup like usual. THANKS!

**Measuring:** A volunteer measuring official will be on site. Check with the score table for more info.

Go To  
[www.r2agility.net](http://www.r2agility.net)  
for Check-In, Running Order, and Maps

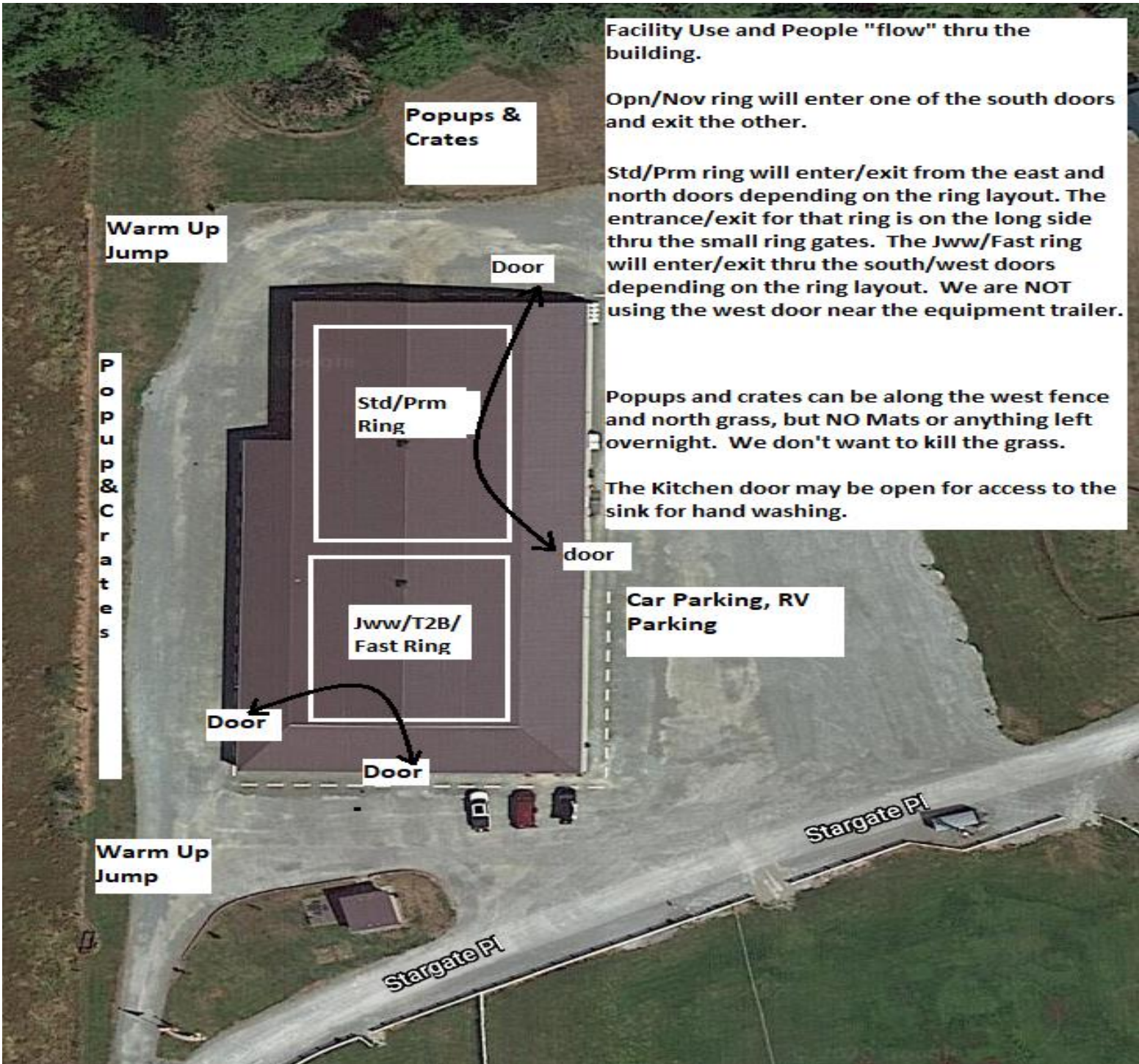
- Course Maps:** We will not be providing general paper copies of course maps. Maps will be made available on our website – [www.r2agility.net](http://www.r2agility.net) sometime after **midnight**. **Judges are not allowed to send us maps until after midnight** and we will make every effort to email/post them by 7:30 AM. Maps will be posted at a couple of places around the arena.
- Gate Check-in:** We will have a normal gate steward with a paper gate sheet but will also be using an electronic gate checking and monitoring system available by any internet or Wi-Fi enabled device with a web browser.
- The system allows you to check-in, mark conflict or absent, see progress, and live scores as they are entered into the computer. Please check the status to make sure your runs are correct.
- Maps will also be available on the same page (internet or local) sometime after 7:30 AM.
- Results:** Results will be posted in the arena and will be available on the same web page as the running order.

**Important Housekeeping Info**

Please use the exercise fields or the grassy areas around the parking lot to walk your dog. Please pick up after your dog. If your dog accidentally relieves itself on the building structure, please use the cleaning sprays provided by Fun Fur Paws.

**Pull-in parking around the building ONLY. Do NOT back in to park around the building. If you do, you will be required to re-park.**

**5 MPH Speed Limit at Fun Fur Paws**  
(That includes the driveway from the road to the arena)



Facility Use and People "flow" thru the building.

Opn/Nov ring will enter one of the south doors and exit the other.

Std/Prm ring will enter/exit from the east and north doors depending on the ring layout. The entrance/exit for that ring is on the long side thru the small ring gates. The Jww/Fast ring will enter/exit thru the south/west doors depending on the ring layout. We are NOT using the west door near the equipment trailer.

Popups and crates can be along the west fence and north grass, but NO Mats or anything left overnight. We don't want to kill the grass.

The Kitchen door may be open for access to the sink for hand washing.

Popups & Crates

Warm Up Jump

P  
o  
p  
u  
p  
&  
C  
r  
a  
t  
e  
s

Door

Std/Prm Ring

Jww/T2B/  
Fast Ring

door

Door

Door

Car Parking, RV  
Parking

Warm Up  
Jump

Stargate Pl

Stargate Pl

	Ring 1	Ring 2
<p><b>Friday</b> <b>10:00 AM start</b></p> <p>Tall to Small</p> <p>First time in each ring is accurate, all others are estimates. Plan to be at the trial site well before the listed time in case we run early.</p>	<p><b>10:30</b>    <b>Prm Jww</b> Walk Run</p> <p><b>11:30</b>    <b>Prm Std</b> Walk Run</p> <p><b>12:45</b>    <b>Exc Std</b> Walk 24-20 Run 24-20</p> <p><b>1:40</b>      Walk 16 Run 16</p> <p><b>2:30</b>      Walk 12-4 Run 12-4</p> <p><b>3:50</b>      <b>Open Std</b> Walk Run</p> <p><b>4:40</b>      <b>Novice Std</b> Walk Run</p> <p><b>5:00</b>      Done</p>	<p><b>10:00</b>    <b>Fast Exc/Opn/Nov</b> Walk 24-20 Walk 16-4 Run all heights / classes</p> <p><b>11:40</b>    <b>T2B</b> Walk 24-20 Walk 16-4 Run</p> <p><b>1:00</b>      <b>Nov Jww</b> Walk Run</p> <p><b>1:55</b>      <b>Open Jww</b> Walk Run</p> <p><b>2:50</b>      <b>Exc Jww</b> Walk 24-20 Run 24-20</p> <p><b>3:35</b>      Walk 16 Run 16</p> <p><b>4:15</b>      Walk 12-4 Run 12-4</p> <p><b>4:40</b>      Done</p>

# Saturday

## 9:00 AM start

Small to Tall

First time in each ring is accurate, all others are estimates. Plan to be at the trial site well before the listed time in case we run early.

**Prm Jww**  
Walk  
9:30 Run

**Prm Std**  
Walk  
10:40 Run

**Exc Std**  
Walk 4-12  
12:00 Run 4-12

Walk 16  
12:50 Run 16

Walk 20-24  
1:40 Run 20-24

**Open Std**  
Walk  
3:00 Run

**Novice Std**  
Walk  
4:00 Run

4:25 Done

**Fast Exc/Opn/Nov**  
Walk 4-16  
Walk 20-24  
9:00 Run all heights / classes

**T2B**  
Walk 4-16  
Walk 20-24  
10:30 Run

**Nov Jww**  
Walk  
12:00 Run

**Open Jww**  
Walk  
1:00 Run

**Exc Jww**  
Walk 4-12  
Run 4-12  
2:00

Walk 16  
2:40 Run 16

Walk 20-24  
3:15 Run 20-24

3:50 Done

# Sunday

## 9:00 AM start

Tall to Small

First time in each ring is accurate, all others are estimates. Plan to be at the trial site well before the listed time in case we run early.

9:30 **Prm Jww**  
Walk  
Run

10:30 **Prm Std**  
Walk  
Run

11:45 **Exc Std**  
Walk 24-20  
Run 24-20

12:40 Walk 16  
Run 16

1:30 Walk 12-4  
Run 12-4

2:40 **Open Std**  
Walk  
Run

3:45 **Novice Std**  
Walk  
Run

5:00 Done

**Fast Exc/Opn/Nov**  
Walk 24-20  
Walk 16-4  
9:00 Run all heights / classes

**T2B**  
Walk 24-20  
Walk 16-4  
10:20 Run

**Nov Jww**  
Walk  
11:30 Run

**Open Jww**  
Walk  
12:30 Run

**Exc Jww**  
Walk 24-20  
Run 24-20  
1:25

2:10 Walk 16  
Run 16

2:45 Walk 12-4  
Run 12-4

3:15 Done

# TRIAL ENTRY STATISTICS

Preliminary running order contingent on move-ups not yet received.

## Friday – 420 runs

STD	NOV									Judge	Ring
Division	4	8	12	16	20	24	24C	14	18	Dale Mahoney	1
NOV A					1					Dale Mahoney	1
NOV B		1	1		4	2	1			Dale Mahoney	1
NOV P				1	2					Dale Mahoney	1
NOV		1	1	1	7	2	1			<b>TOTAL</b>	13
STD	OPN										
Division	4	8	12	16	20	24	24C	14	18	Dale Mahoney	1
OPEN		2	2	2	3	4				Dale Mahoney	1
OPEN P		1	1							Dale Mahoney	1
OPN		3	3	2	3	4				<b>TOTAL</b>	15
STD	EXC										
Division	4	8	12	16	20	24	24C	14	18	Dale Mahoney	1
EX			2	2	9	3	1			Dale Mahoney	1
EX P	1	2		4	4					Dale Mahoney	1
MAS		7	9	7	9	2	1			Dale Mahoney	1
MAS P	1	6	6	16	5					Dale Mahoney	1
EXC	2	15	17	29	27	5	2			<b>TOTAL</b>	97
STD	PREM										
Division	4	8	12	16	20	24	24C	14	18	Dale Mahoney	1
PRM		3	2	4	10	3				Dale Mahoney	1
PRM P	1			4	1					Dale Mahoney	1
PREM	1	3	2	8	11	3				<b>TOTAL</b>	28
JWW	NOV										
Division	4	8	12	16	20	24	24C	14	18	Jan Skurzynski	2
NOV A					1					Jan Skurzynski	2
NOV B		2	1		3	5	1			Jan Skurzynski	2
NOV P		1		3	2					Jan Skurzynski	2
NOV		3	1	3	6	5	1			<b>TOTAL</b>	19
JWW	OPN										
Division	4	8	12	16	20	24	24C	14	18	Jan Skurzynski	2
OPEN		2	1	2	6	2				Jan Skurzynski	2
OPEN P		1	2	2	1					Jan Skurzynski	2
OPN		3	3	4	7	2				<b>TOTAL</b>	19
JWW	EXC										
Division	4	8	12	16	20	24	24C	14	18	Jan Skurzynski	2
EX		1	2	1	3	5				Jan Skurzynski	2
EX P	1	1		1						Jan Skurzynski	2
MAS		7	10	8	13	2	2			Jan Skurzynski	2
MAS P		6	5	15	8					Jan Skurzynski	2
EXC	1	15	17	25	24	7	2			<b>TOTAL</b>	91
JWW	PREM										
Division	4	8	12	16	20	24	24C	14	18	Dale Mahoney	1
PRM		1	2	4	9	3				Dale Mahoney	1
PRM P	1			2	1					Dale Mahoney	1
PREM	1	1	2	6	10	3				<b>TOTAL</b>	23
FAST	NOV										
Division	4	8	12	16	20	24	24C	14	18	Jan Skurzynski	2
NOV A					1					Jan Skurzynski	2
NOV B			2	3	2	2				Jan Skurzynski	2
NOV P		3	3	2	1					Jan Skurzynski	2
NOV		3	5	5	4	2				<b>TOTAL</b>	19
FAST	OPN										
Division	4	8	12	16	20	24	24C	14	18	Jan Skurzynski	2
OPEN		2	1		2	1				Jan Skurzynski	2
OPEN P		1		1	1					Jan Skurzynski	2
OPN		3	1	1	3	1				<b>TOTAL</b>	9
FAST	EXC										
Division	4	8	12	16	20	24	24C	14	18	Jan Skurzynski	2
EX				2	3	2				Jan Skurzynski	2
EX P		1								Jan Skurzynski	2
MAS		5	1	2	5	2				Jan Skurzynski	2
MAS P		1	4	1						Jan Skurzynski	2
EXC		7	5	5	8	4				<b>TOTAL</b>	29
T2B	T2B										
Division	4	8	12	16	20	24	24C	14	18	Jan Skurzynski	2
PREF	3	8	8	6	3					Jan Skurzynski	2
REG		7	4	6	6	6	1			Jan Skurzynski	2
T2B	3	15	12	12	9	6	1			<b>TOTAL</b>	58
Judge Totals										Ring Totals	
Dale Mahoney		176								Ring 1	176
Jan Skurzynski		244								Ring 2	244

# Saturday – 436 runs

STD	NOV										
<b>Division</b>	<b>4</b>	<b>8</b>	<b>12</b>	<b>16</b>	<b>20</b>	<b>24</b>	<b>24C</b>	<b>14</b>	<b>18</b>	<b>Judge</b>	<b>Ring</b>
NOV A					1					Jan Skurzynski	1
NOV B		1		1	6	2				Jan Skurzynski	1
NOV P		1		1	1					Jan Skurzynski	1
NOV		2		2	8	2				<b>TOTAL</b>	14
<b>Division</b>	<b>4</b>	<b>8</b>	<b>12</b>	<b>16</b>	<b>20</b>	<b>24</b>	<b>24C</b>	<b>14</b>	<b>18</b>	<b>Judge</b>	<b>Ring</b>
OPEN		1	2	2	10	5				Jan Skurzynski	1
OPEN P					1					Jan Skurzynski	1
OPN		1	2	2	11	5				<b>TOTAL</b>	21
<b>Division</b>	<b>4</b>	<b>8</b>	<b>12</b>	<b>16</b>	<b>20</b>	<b>24</b>	<b>24C</b>	<b>14</b>	<b>18</b>	<b>Judge</b>	<b>Ring</b>
EX		1	1	1	7	4	1			Jan Skurzynski	1
EX P		1		3	3					Jan Skurzynski	1
MAS		9	8	3	11	2	2			Jan Skurzynski	1
MAS P		6	8	18	5					Jan Skurzynski	1
EXC		17	17	25	26	6	3			<b>TOTAL</b>	94
<b>Division</b>	<b>4</b>	<b>8</b>	<b>12</b>	<b>16</b>	<b>20</b>	<b>24</b>	<b>24C</b>	<b>14</b>	<b>18</b>	<b>Judge</b>	<b>Ring</b>
PRM		2	2	2	12	2	2			Jan Skurzynski	1
PRM P	1	1	3	4						Jan Skurzynski	1
PREM	1	3	5	6	12	2	2			<b>TOTAL</b>	31
<b>Division</b>	<b>4</b>	<b>8</b>	<b>12</b>	<b>16</b>	<b>20</b>	<b>24</b>	<b>24C</b>	<b>14</b>	<b>18</b>	<b>Judge</b>	<b>Ring</b>
NOV A					1					Dale Mahoney	2
NOV B		2	1	1	9	4				Dale Mahoney	2
NOV P		2		2	3					Dale Mahoney	2
NOV		4	1	3	13	4				<b>TOTAL</b>	25
<b>Division</b>	<b>4</b>	<b>8</b>	<b>12</b>	<b>16</b>	<b>20</b>	<b>24</b>	<b>24C</b>	<b>14</b>	<b>18</b>	<b>Judge</b>	<b>Ring</b>
OPEN		2	1	1	9	5				Dale Mahoney	2
OPEN P			1	1	1					Dale Mahoney	2
OPN		2	2	2	10	5				<b>TOTAL</b>	21
<b>Division</b>	<b>4</b>	<b>8</b>	<b>12</b>	<b>16</b>	<b>20</b>	<b>24</b>	<b>24C</b>	<b>14</b>	<b>18</b>	<b>Judge</b>	<b>Ring</b>
EX		1	1	2	3	5				Dale Mahoney	2
EX P				1						Dale Mahoney	2
MAS		9	8	4	14	2	3			Dale Mahoney	2
MAS P		6	7	18	6					Dale Mahoney	2
EXC		16	16	25	23	7	3			<b>TOTAL</b>	90
<b>Division</b>	<b>4</b>	<b>8</b>	<b>12</b>	<b>16</b>	<b>20</b>	<b>24</b>	<b>24C</b>	<b>14</b>	<b>18</b>	<b>Judge</b>	<b>Ring</b>
PRM		2	2	4	11	2	2			Jan Skurzynski	1
PRM P	1		2	2	1					Jan Skurzynski	1
PREM	1	2	4	6	12	2	2			<b>TOTAL</b>	29
<b>Division</b>	<b>4</b>	<b>8</b>	<b>12</b>	<b>16</b>	<b>20</b>	<b>24</b>	<b>24C</b>	<b>14</b>	<b>18</b>	<b>Judge</b>	<b>Ring</b>
NOV A					1					Dale Mahoney	2
NOV B			2	1	1	3				Dale Mahoney	2
NOV P		2	2	2	2					Dale Mahoney	2
NOV		2	4	3	4	3				<b>TOTAL</b>	16
<b>Division</b>	<b>4</b>	<b>8</b>	<b>12</b>	<b>16</b>	<b>20</b>	<b>24</b>	<b>24C</b>	<b>14</b>	<b>18</b>	<b>Judge</b>	<b>Ring</b>
OPEN		2			3	1				Dale Mahoney	2
OPEN P		2		1	1					Dale Mahoney	2
OPN		4		1	4	1				<b>TOTAL</b>	10
<b>Division</b>	<b>4</b>	<b>8</b>	<b>12</b>	<b>16</b>	<b>20</b>	<b>24</b>	<b>24C</b>	<b>14</b>	<b>18</b>	<b>Judge</b>	<b>Ring</b>
EX					3	3				Dale Mahoney	2
EX P		2								Dale Mahoney	2
MAS		5	2	1	6	2				Dale Mahoney	2
MAS P		1	4	3						Dale Mahoney	2
EXC		8	6	4	9	5				<b>TOTAL</b>	32
<b>Division</b>	<b>4</b>	<b>8</b>	<b>12</b>	<b>16</b>	<b>20</b>	<b>24</b>	<b>24C</b>	<b>14</b>	<b>18</b>	<b>Judge</b>	<b>Ring</b>
PREF	1	3	7	7	4					Dale Mahoney	2
REG		6	2	3	13	7				Dale Mahoney	2
T2B	1	9	9	10	17	7				<b>TOTAL</b>	53
<b>Judge Totals</b>										<b>Ring Totals</b>	
<b>Dale Mahoney</b>										<b>Ring 1</b>	189
<b>Jan Skurzynski</b>										<b>Ring 2</b>	247



# Sunday – 389 runs

STD		NOV									
Division	4	8	12	16	20	24	24C	14	18	Judge	Ring
NOV A					1					Dale Mahoney	1
NOV B					1	4	1			Dale Mahoney	1
NOV P			1	1	2					Dale Mahoney	1
NOV			1	1	4	4	1			<b>TOTAL</b>	11
STD		OPN									
Division	4	8	12	16	20	24	24C	14	18	Judge	Ring
OPEN		1	2	1	9	5				Dale Mahoney	1
OPEN P			2		1					Dale Mahoney	1
OPN		1	4	1	10	5				<b>TOTAL</b>	21
STD		EXC									
Division	4	8	12	16	20	24	24C	14	18	Judge	Ring
EX		1		2	6	4	1			Dale Mahoney	1
EX P	1	1	1	3	6					Dale Mahoney	1
MAS		9	8	6	9	2	1			Dale Mahoney	1
MAS P		6	4	16	6					Dale Mahoney	1
EXC	1	17	13	27	27	6	2			<b>TOTAL</b>	93
STD		PREM									
Division	4	8	12	16	20	24	24C	14	18	Judge	Ring
PRM		2	2	2	8	2				Dale Mahoney	1
PRM P	1		3	4						Dale Mahoney	1
PREM	1	2	5	6	8	2				<b>TOTAL</b>	24
JWW		NOV									
Division	4	8	12	16	20	24	24C	14	18	Judge	Ring
NOV A					1					Jan Skurzynski	2
NOV B			1		8	5	1			Jan Skurzynski	2
NOV P		1		1	4					Jan Skurzynski	2
NOV		1	1	1	13	5	1			<b>TOTAL</b>	22
JWW		OPN									
Division	4	8	12	16	20	24	24C	14	18	Judge	Ring
OPEN		1	1	2	4	4				Jan Skurzynski	2
OPEN P		1	2	1	3					Jan Skurzynski	2
OPN		2	3	3	7	4				<b>TOTAL</b>	19
JWW		EXC									
Division	4	8	12	16	20	24	24C	14	18	Judge	Ring
EX		1		1	3	5				Jan Skurzynski	2
EX P	1		1	1	1					Jan Skurzynski	2
MAS		9	8	6	12	2	2			Jan Skurzynski	2
MAS P		6	4	16	9					Jan Skurzynski	2
EXC	1	16	13	24	25	7	2			<b>TOTAL</b>	88
JWW		PREM									
Division	4	8	12	16	20	24	24C	14	18	Judge	Ring
PRM		2	3	2	8	2				Dale Mahoney	1
PRM P	1		1	5	1					Dale Mahoney	1
PREM	1	2	4	7	9	2				<b>TOTAL</b>	25
FAST		NOV									
Division	4	8	12	16	20	24	24C	14	18	Judge	Ring
NOV A					1					Jan Skurzynski	2
NOV B				1	3	2				Jan Skurzynski	2
NOV P		2		1	2					Jan Skurzynski	2
NOV		2		2	6	2				<b>TOTAL</b>	12
FAST		OPN									
Division	4	8	12	16	20	24	24C	14	18	Judge	Ring
OPEN			1		2					Jan Skurzynski	2
OPEN P			1							Jan Skurzynski	2
OPN			2		2					<b>TOTAL</b>	4
FAST		EXC									
Division	4	8	12	16	20	24	24C	14	18	Judge	Ring
EX				1	2	2				Jan Skurzynski	2
EX P		1								Jan Skurzynski	2
MAS		5	2	2	5	2				Jan Skurzynski	2
MAS P		1	3	2						Jan Skurzynski	2
EXC		7	5	5	7	4				<b>TOTAL</b>	28
T2B		T2B									
Division	4	8	12	16	20	24	24C	14	18	Judge	Ring
PREF	1	6	4	5	1					Jan Skurzynski	2
REG		4	3	2	11	4	1			Jan Skurzynski	2
T2B	1	10	7	7	12	4	1			<b>TOTAL</b>	42
Judge Totals										Ring Totals	
Dale Mahoney		174								Ring 1	174
Jan Skurzynski		215								Ring 2	215